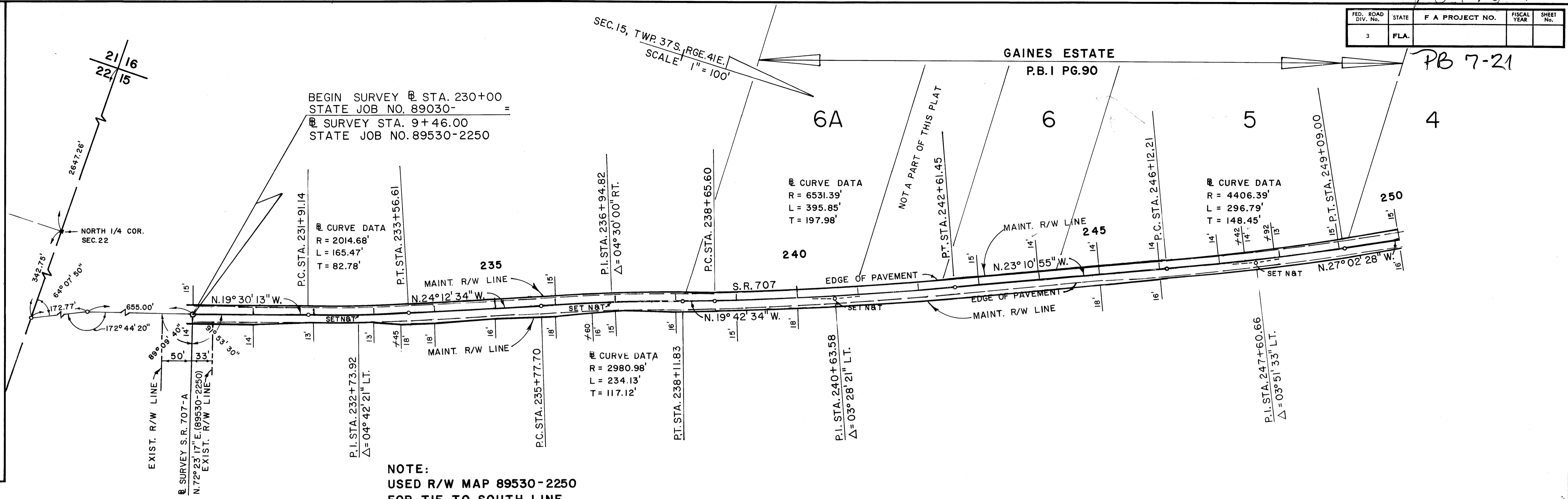
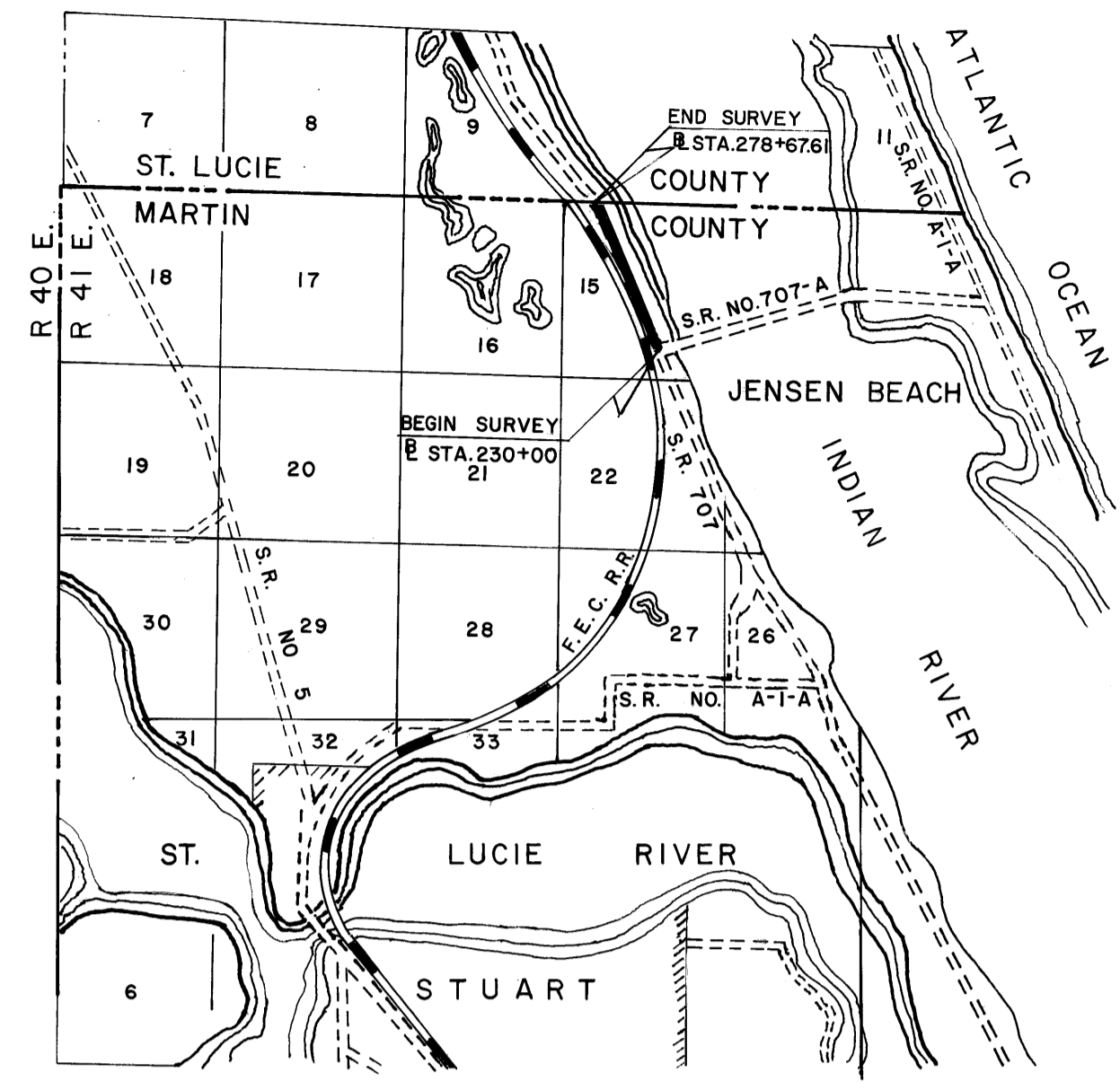
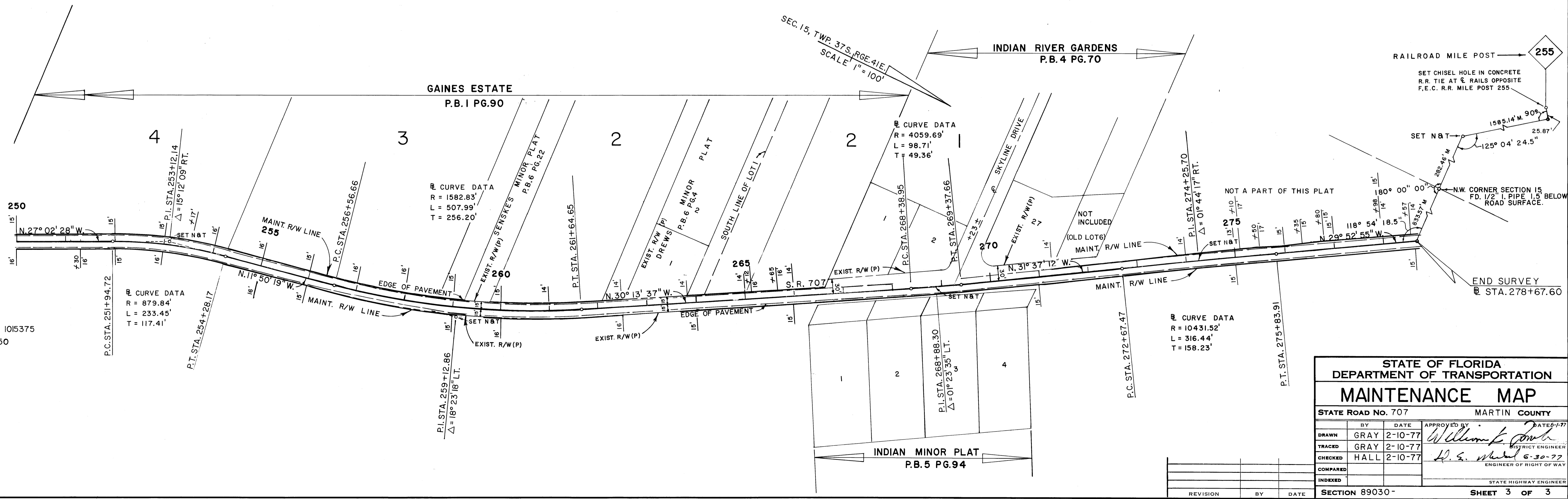


FED. ROAD DIV. NO.	STATE	F A PROJECT NO.	FISCAL YEAR	SHEET NO.
3	FLA.			



NOTE:
USED R/W MAP 89530-2250
FOR TIE TO SOUTH LINE
OF SECTION 15.



REFERENCES
FIELD BOOKS 1012593, 1015375
R/W MAP 89530-2250

STATE OF FLORIDA DEPARTMENT OF TRANSPORTATION				
MAINTENANCE MAP				
STATE ROAD No. 707		MARTIN COUNTY		
DRAWN	BY	DATE	APPROVED BY	DATE
GRAY	GRAY	2-10-77	<i>William F. Smith</i>	2-10-77
TRACED	BY	DATE	DISTRICT ENGINEER	
HALL	HALL	2-10-77	<i>H. S. Whelan</i>	6-30-77
CHECKED	BY	DATE	ENGINEER OF RIGHT OF WAY	
COMPARED	BY	DATE		
INDEXED	BY	DATE		
SECTION 89030-				SHEET 3 OF 3